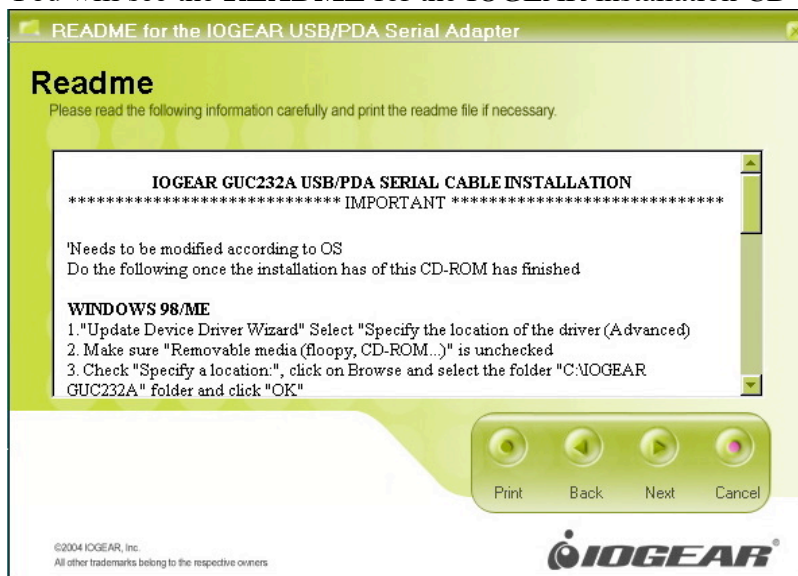


IOGEAR USB to Serial Adapter  
Microsoft Windows Installation Instructions  
2000, Millennium, and 98SE

- 1) Insert the IOGEAR Installation CD-ROM into your computer.
- 2) You will see the **README** for the IOGEAR installation CD-ROM.



- 3) After you click **Continue**, you will be presented with the **End User Agreement** of the IOGEAR USB to Serial Adapter.

**It is strongly suggested that you read in the End User Agreement in its entirety.**

Once you have finished reading, you may select **"I accept the terms in this License Agreement"** if you wish to continue the installation procedure.



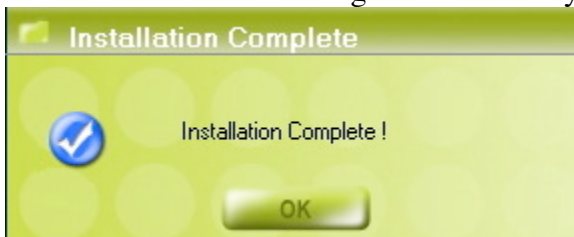
- 4) You will now begin the installation procedure. Click “Start”



- 5) The installation procedure will begin.

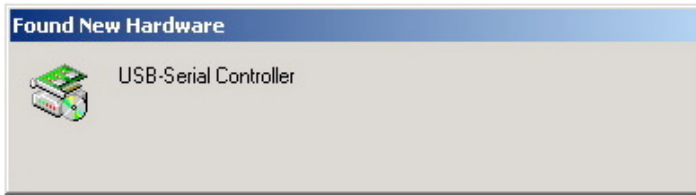


- 6) You have finished installing the drivers for your IOGEAR USB to Serial Adapter.

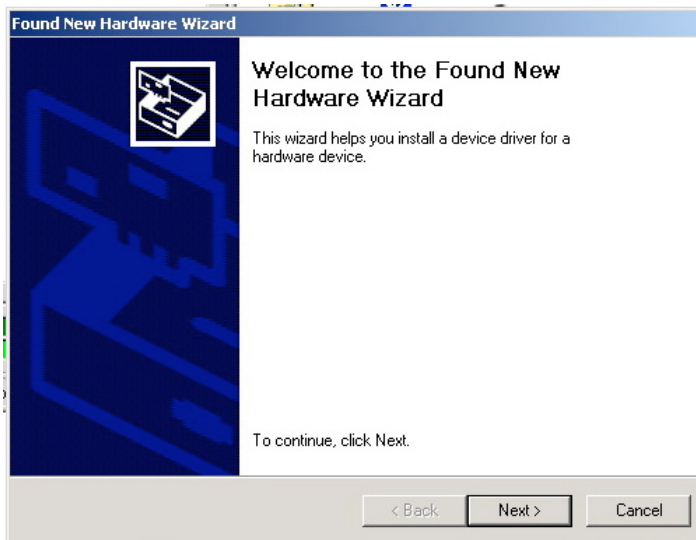


- 7) Now you may plug-in your IOGEAR USB to Serial Adapter to complete installation.

Once you plug-in the adapter, Windows will say that it has found a USB/Serial Controller



- 8) Windows will tell you that New Hardware has been found. Click **Next**



- 9) Windows will now ask you if you wish to search for the device driver.

Select “Search for suitable device driver for my device (recommended)” then click Continue



- 10) Windows will now ask you to insert the Manufacturer's driver disk into the CD-ROM.

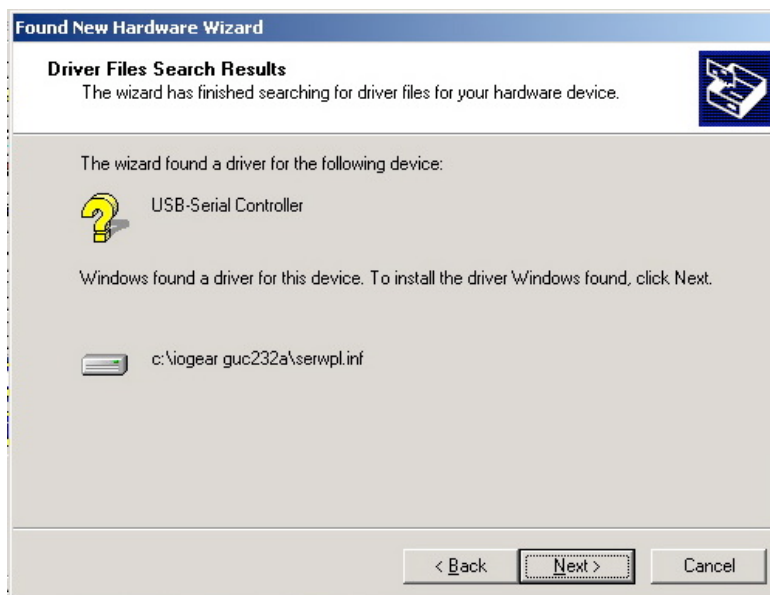
Type in: **C:\IOGEAR GUC232A**



....then Click **OK**

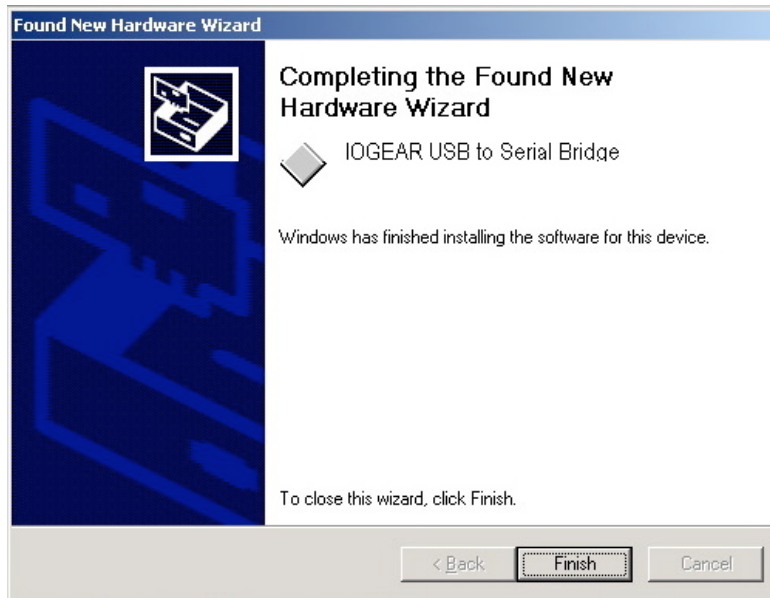
- 11) Windows will now tell you that a device driver has been found.

Click **Next**



12) Windows will now tell you that the device driver installation has been completed.

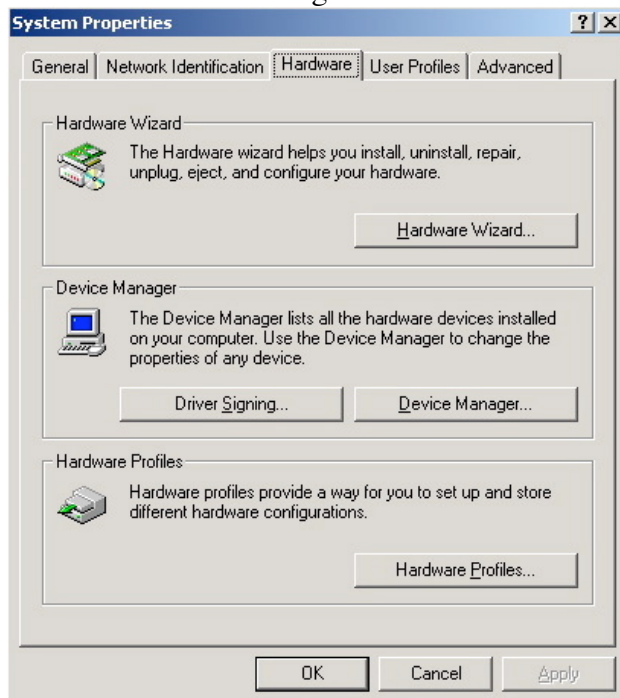
Click **Finish**



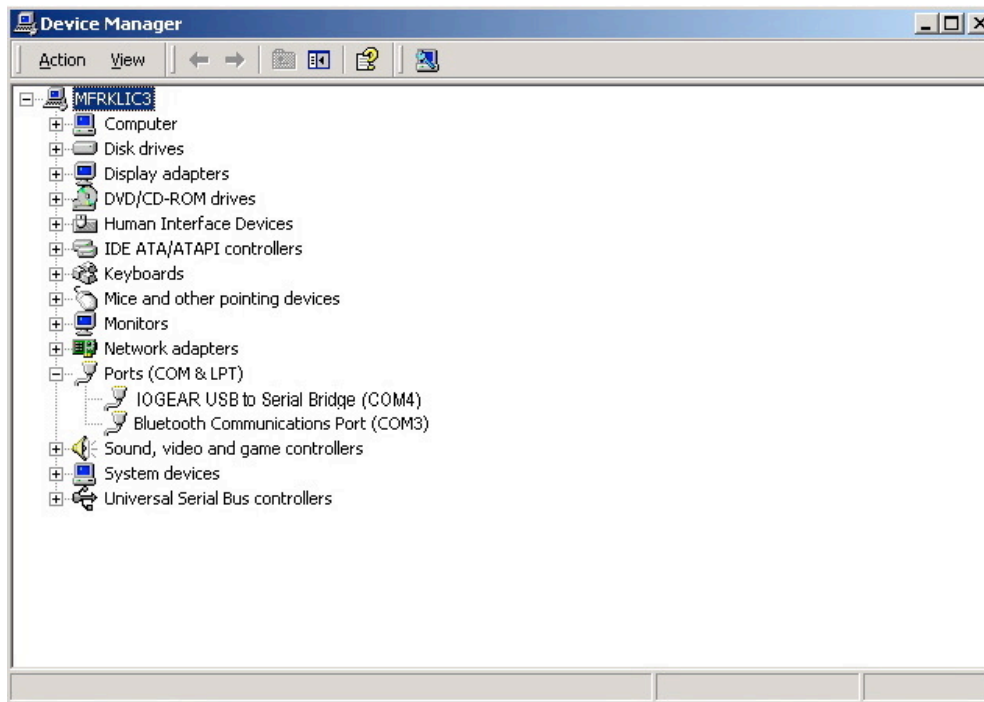
13) Once you have completed the installation, you're probably going to want to know what COM port your IOGEAR USB to Serial Adapter is installed as.

Open Device Manager by Right-Clicking on the My Computer icon on your desktop, then click Properties.

Select the Device Manager tab.



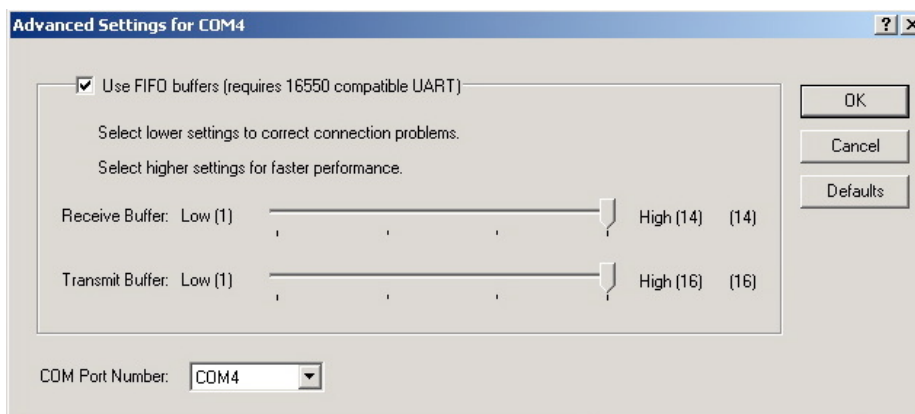
14) Click the **Device Manager** button. You will see the Device Manager of your computer.



The (COM4) represents which Communications Port your IOGEAR USB to Serial Adapter is assigned to.

### **ATTENTION! - Windows 2000 & XP Users**

You may change this by double-clicking the IOGEAR USB to Serial Bridge (COM4) in the Device Manager, select **Port Settings**, and click the **Advanced** button.



The COM Port # will change to whatever address you select, then click OK.

However, if you unplug and plug the IOGEAR USB to Serial Adapter into any other USB port on your computer, this COM Port # **MAY** change. Leave the adapter in the USB port you have installed it in, so that the COM Port # will stay the same.